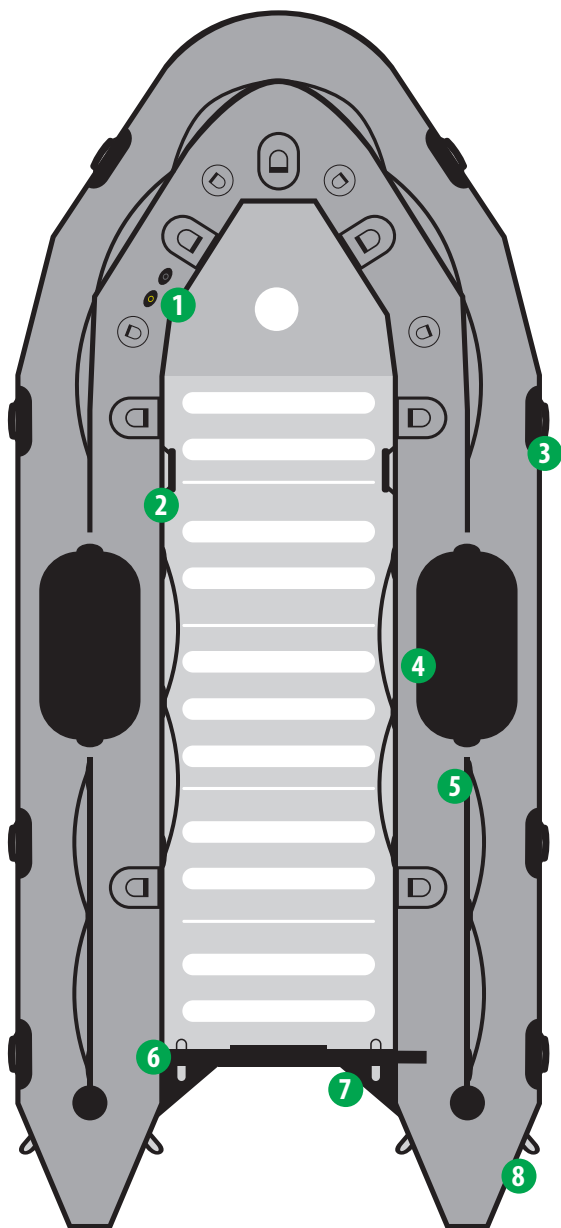


LAYOUT



MODEL COLORS

MEHLER
WELDED SEAMS



PATROL (PT)



MILITARY (MIL)



SEARCH & RESCUE (SR)

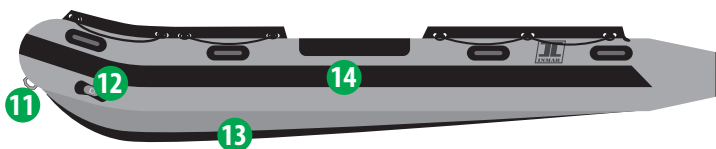
FEATURES

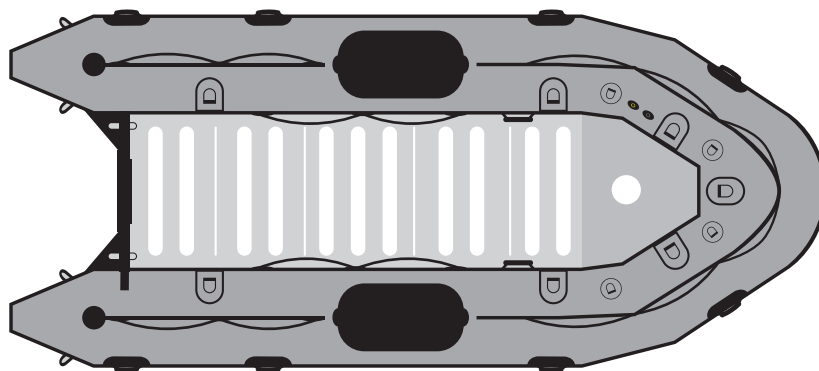
- 1.- Inflation and over inflation valves (One for each air chamber)
- 2.- Interior grab handles
- 3.- Exterior carry handles, non-slip design
- 4.- Dive patch
- 5.- Lifelines (Peripheral)
- 6.- Transom lifting rings (Stainless steel)
- 7.- Splash guard
- 8.- Two large D-rings on rear tubes (Stainless steel)
- 9.- Fiberglass transom
- 10.- Single point self-bailing system (high-flow scupper option)
- 11.- Bow handle (Stainless)
- 12.- Two large tow rings on bow (Stainless steel)
- 13.- Keel rub strake
- 14.- All around rub strake, flat profile, black

REAR



SIDE





CAPACITY

Passenger capacity:	12
Max payload:	2,985 lbs.
Floorboard usable area:	31 ft ²
Buoyancy tube volume:	65 ft ³

FABRIC / SEAM CONSTRUCTIONS

Mehler 1.2mm (1,450 dtx)
 RF welded / temperature resistance -30 °C / +70 °C

VALVES

Inflation valves on main tube:	5
Keel inflation valve:	1
Overinflation valves:	5

REINFORCEMENTS

All around rub strake, flat profile, black:	1
Flat rub strake underneath keel, black:	1
Splash guard:	2

HANDLING

Lateral carrying handles:	8
Bow carrying handle:	1
Exterior lifeline (peripheral):	3
Interior lifelines:	2
Interior large tie down D-Ring:	7
Bow bag D-Ring:	4

FACTORY WARRANTY

3 years recreational / 2 years commercial/government

TRANSOM

Self-bailers	1
Aluminum engine mounting plate:	1
Transom sacrificial plate (Fiberglass)	1

ENGINE (aluminum floor)

Recommended power (aluminum floor)	40 HP
Max power (aluminum floor):	60 HP
Shaft length:	20" long shaft
Max engine weight:	250 lb

DIMENSIONS

Overall length:	17' 8"
Inner length:	13' 6"
Overall width:	7' 2"
Inner width:	3' 3"
Tube diameter:	22"
Boat weight with floor:	340 lbs

INFLATION

Air chambers on main tube:	5
Inflatable keel:	1

TOWING AND LIFTING

D-Rings:	Stainless steel
Bow large towing D-Ring:	2
Rear large towing D-Ring:	2
Rear lifting points in transome:	2

OPTIONAL FEATURES

Performance Tubes - For speed & stability	2
High-flow scuppers - Quick drain system	2

SHIPPING INFORMATION



BOAT

- Package dimensions: 58X30X20
- Package weight: 285 lbs.



FLOOR

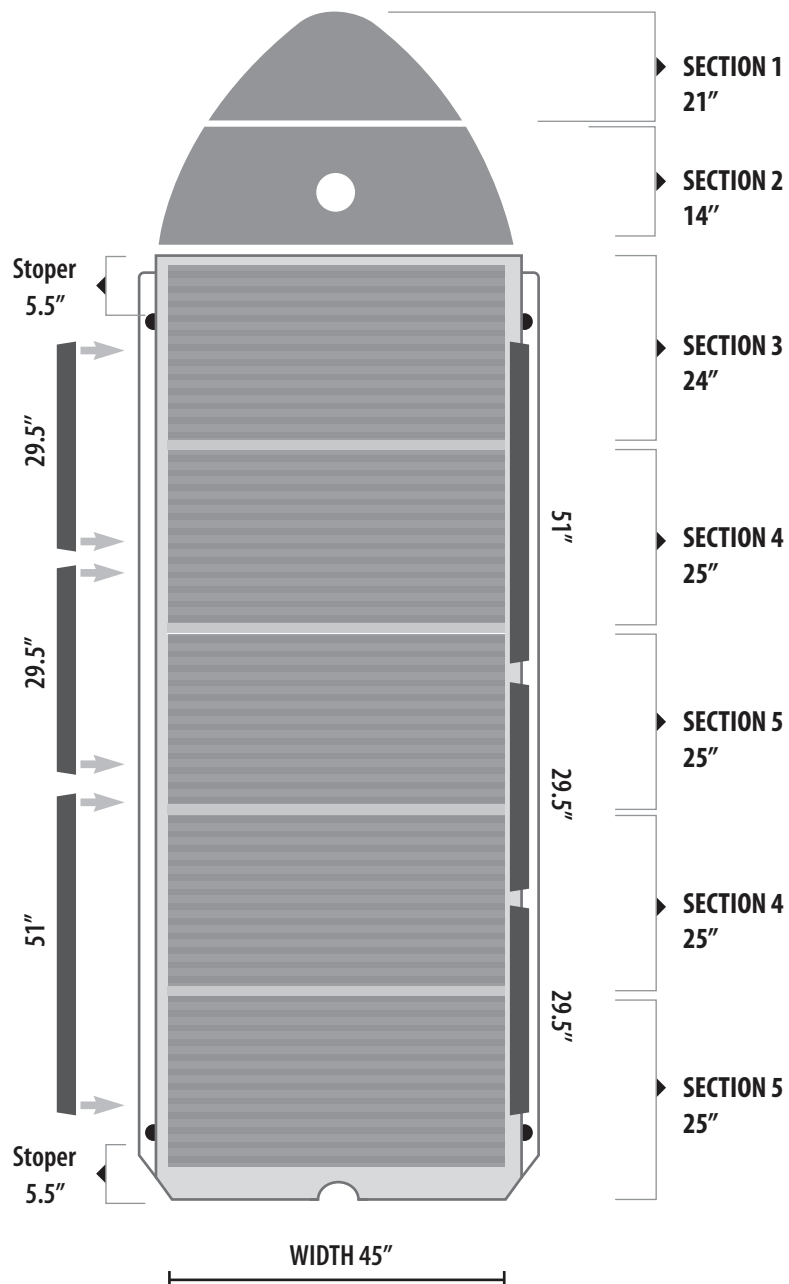
- Floor dimensions: 52X30X16
- Floor package weight: 215 lbs.

FLOOR OPTIONS

ALUMINUM FLOOR

24 mm profile gauge
5086 marine grade-treated
Non skid EVA traction

Front floor boards (Fiberglass)	2
Aluminum sectional flooring	5
Side locking rails	6



**Floor must be removed prior to roll-up storage*

OPTIONAL EQUIPMENT



Quick inflation system



SCBA Adaptor



High flow scuppers



Bow bag



6 gl fuel bladder



**Aluminum floor shown*



**Optional bow bag*

