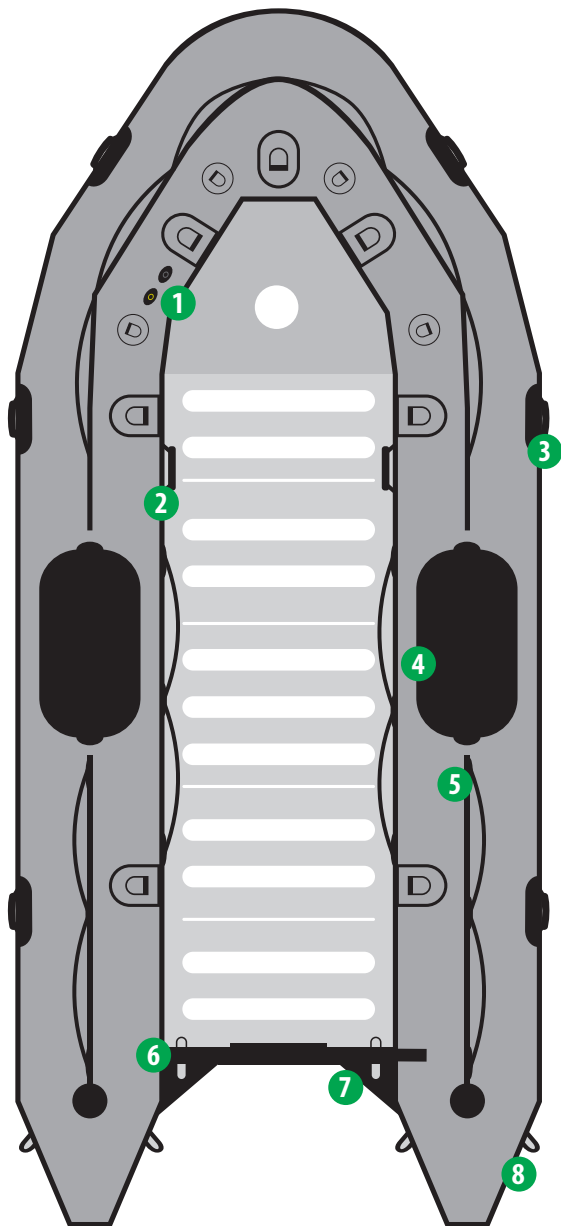


LAYOUT



MODEL COLORS

MEHLER
WELDED SEAMS



PATROL (PT)



MILITARY (MIL)



SEARCH & RESCUE (SR)

FEATURES

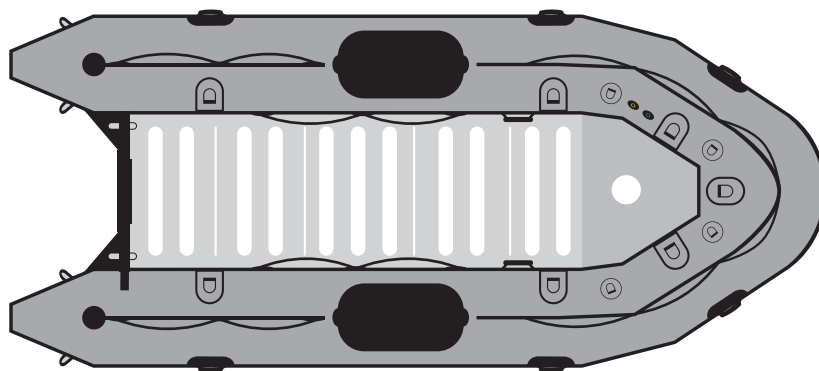
- 1.- Inflation and over inflation valves (One for each air chamber)
- 2.- Interior grab handles
- 3.- Exterior carry handles, non-slip design
- 4.- Dive patch
- 5.- Lifelines (Peripheral)
- 6.- Transom lifting rings (Stainless steel)
- 7.- Splash guard
- 8.- Two large D-rings on rear tubes (Stainless steel)
- 9.- Fiberglass transom
- 10.- Single point self-bailing system (high-flow scupper option)
- 11.- Performance tubes (Optional)
- 12.- Bow handle (Stainless)
- 13.- Two large tow rings on bow (Stainless steel)
- 14.- Keel rub strake
- 15.- All around rub strake, flat profile, black

REAR



SIDE





CAPACITY

Passenger capacity: _____ 6
 Max payload: _____ 1,750 lbs
 Floorboard usable area: _____ 22,2 ft²
 Buoyancy tube volume: _____ 36,4 ft³

FABRIC / SEAM CONSTRUCTIONS

Mehler 1.2mm (1450 dtx)
 RF welded / temperature resistance -30 °C / +70 °C

VALVES

Inflation valves on main tube: _____ 4
 Keel inflation valve: _____ 1
 Overinflation valves: _____ 4

REINFORCEMENTS

All around rub strake, flat profile, black: _____ 1
 Flat rub strake underneath keel, black: _____ 1
 Splash guard: _____ 2

HANDLING

Lateral carrying handles: _____ 6
 Exterior lifeline (peripheral): _____ 3
 Interior lifelines: _____ 2
 Interior large tie down D-Ring: _____ 7
 Bow bag D-Ring: _____ 4

FACTORY WARRANTY

3 years recreational / 1 year commercial

TRANSOM

Self-bailers _____ 1
 Aluminum engine mounting plate: _____ 1
 Transom sacrificial plate (Fiberglass) _____ 1

ENGINE (aluminum floor)

Recommended power (aluminum floor) _____ 20 HP
 Max power (aluminum floor): _____ 30 HP
 Shaft length: _____ 20" long shaft
 Max engine weight: _____ 175 lb

DIMENSIONS

Overall length: _____ 12' 6"
 Inner length: _____ 8' 7"
 Overall width: _____ 6' 5"
 Inner width: _____ 3' 1"
 Tube diameter: _____ 20"
 Boat weight with floor: _____ 220 lbs

INFLATION

Air chambers on main tube: _____ 4
 Inflatable keel: _____ 1

TOWING AND LIFTING

D-Rings: _____ Stainless steel
 Bow carrying handle: _____ 1
 Rear large towing D-Ring: _____ 2
 Rear lifting points in transome: _____ 2

OPTIONAL FEATURES

Performance Tubes - For speed & stability _____ 2
 High-flow scuppers - Quick drain system _____ 2

SHIPPING INFORMATION



BOAT

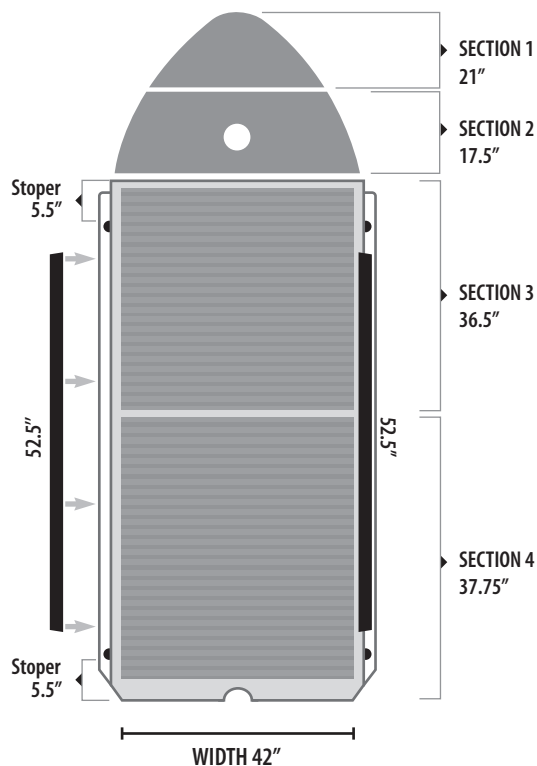
• Package dimensions: 52x34x20
 • Package weight: 193 lbs.



FLOOR

• Floor dimensions: 45x40x7
 • Floor package weight: 109 lbs.

FLOOR OPTIONS



ALUMINUM FLOOR

24 mm profile gauge
5086 marine grade-treated
Non skid EVA traction pads

Front floor boards (Fiberglass)	2
Aluminum sectional flooring	2
Side locking rails	2

**Floor must be removed prior to roll-up storage*

OPTIONAL EQUIPMENT



Quick inflation system



SCBA Adaptor



High flow scuppers



Bow bag



6 gl fuel bladder



Performance tubes

1



2



3



4



5



6



7



8

