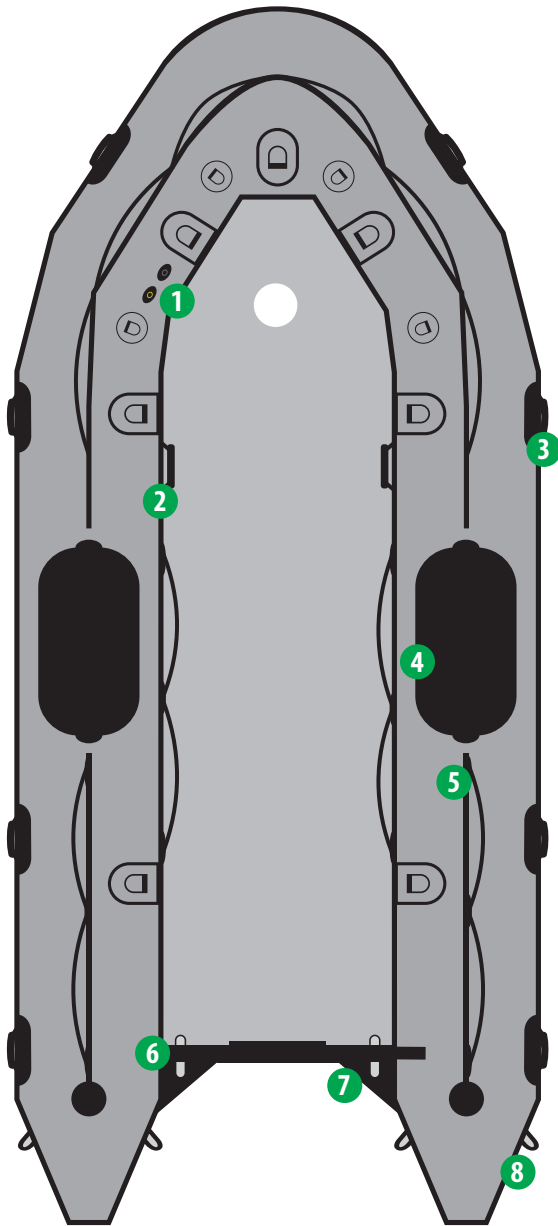


LAYOUT



MODEL COLORS

MEHLER
WELDED SEAMS

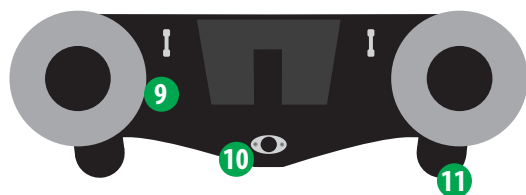


SEARCH & RESCUE (SR)

FEATURES

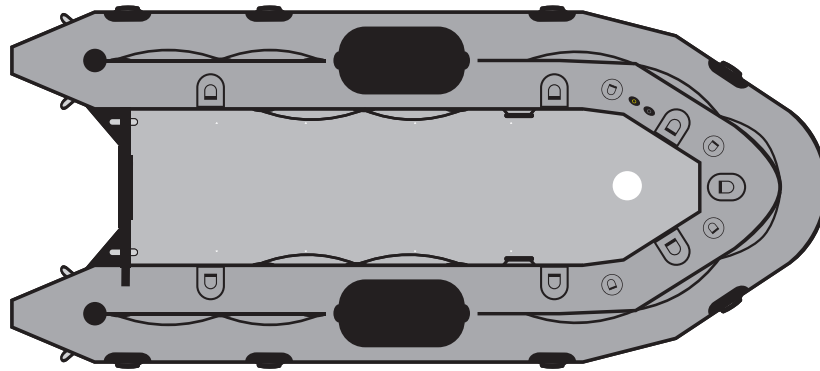
- 1.- Inflation and over inflation valves (One for each air chamber)
- 2.- Interior grab handles
- 3.- Exterior carry handles, non-slip design
- 4.- Dive patch
- 5.- Lifelines (Peripheral)
- 6.- Transom lifting rings (Stainless steel)
- 7.- Splash guard
- 8.- Two large D-rings on rear tubes (Stainless steel)
- 9.- Epoxy coated plywood transom
- 10.- Standard self bailer with plug (Pop-up design)
- 11.- Performance tubes (Optional)
- 12.- Bow handle (Stainless)
- 13.- Two large tow rings on bow (Stainless steel)
- 14.- Keel rub strake
- 15.- All around rub strake, flat profile, black

REAR



SIDE





CAPACITY

Passenger capacity:	8
Max payload:	2,395 lbs
Floorboard usable area:	23,2 ft ²
Buoyancy tube volume:	46,6 ft ³

FABRIC

Hypalon (CSM), Orca 866 (military grade), 1670 dtex

VALVES

Inflation valves on main tube:	5
Keel inflation valve:	1
Overinflation valves:	5

REINFORCEMENTS

All around rub strake, flat profile, black:	1
Flat rub strake underneath keel, black:	1
Splash guard:	2

HANDLING

Lateral carrying handles:	8
Bow carrying handle:	1
Exterior lifeline (peripheral):	3
Interior lifelines:	2
Interior large tie down D-Ring:	7
Bow bag D-Ring:	4

FACTORY WARRANTY

5 years recreational / 2 year commercial

TRANSOM

Self-bailers	1
Aluminum engine mounting plate:	1
Transom sacrificial plate (marine plywood)	1

ENGINE (aluminum floor)

Recommended power (aluminum floor)	30 HP
Max power (aluminum floor):	40 HP
Shaft length:	20" long shaft
Max engine weight:	245 lb

DIMENSIONS

Overall length:	14' 0"
Inner length:	10' 3"
Overall width:	6' 5"
Inner width:	3' 1"
Tube diameter:	20"
Boat weight with floor:	275 lb

INFLATION

Air chambers on main tube:	5
Inflatable keel:	1
Performance tubes (optional):	2

TOWING AND LIFTING

D-Rings:	Stainless steel
Bow large towing D-Ring:	2
Rear large towing D-Ring:	2
Rear lifting points in transome:	2

SHIPPING INFORMATION



BOAT

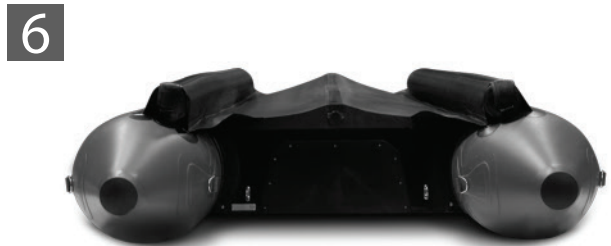
- Package dimensions: 56x30x25
- Package weight: 345 lbs.



**Optional reflective panel*



**Aluminum floor shown*



**Optional performance tubes*

