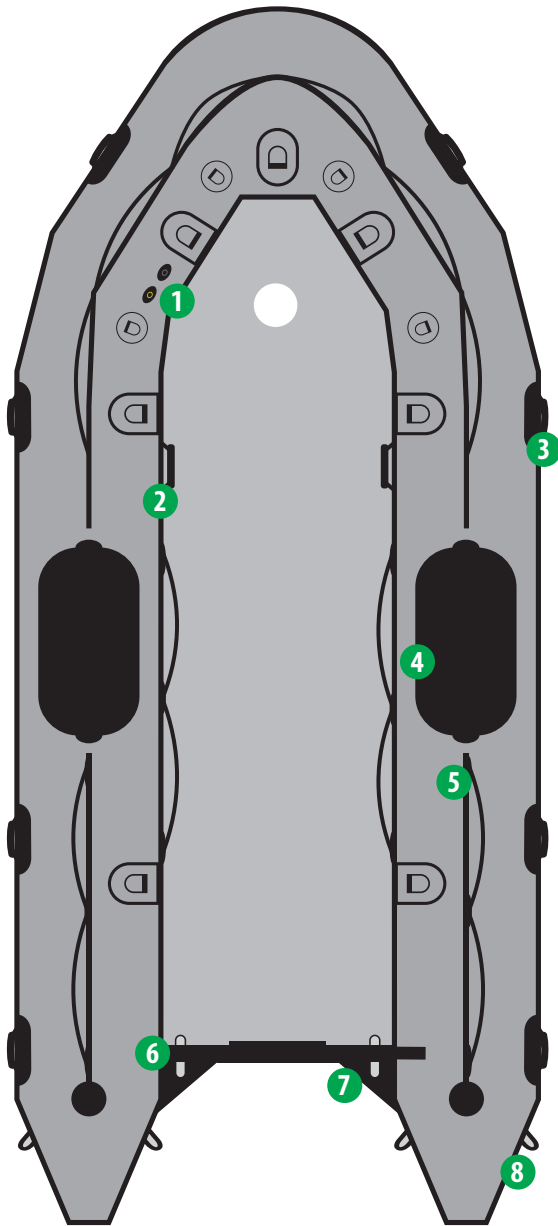


LAYOUT



MODEL COLORS

MEHLER
WELDED SEAMS

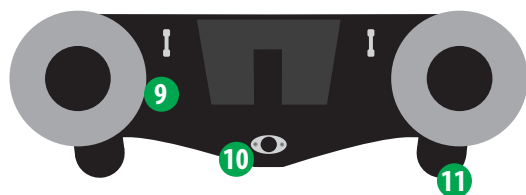


SEARCH & RESCUE (SR)

FEATURES

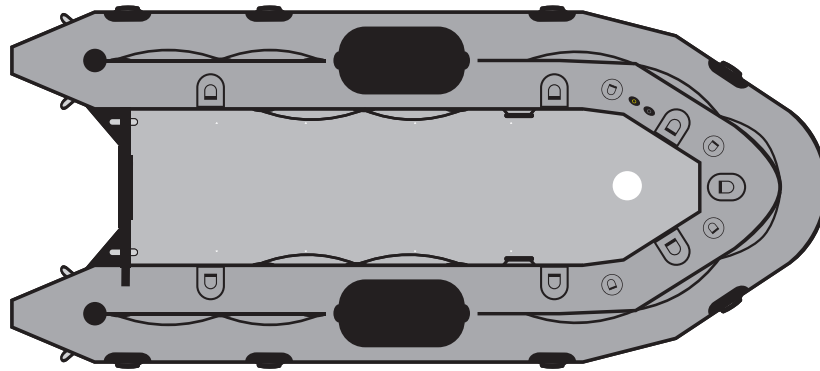
- 1.- Inflation and over inflation valves (One for each air chamber)
- 2.- Interior grab handles
- 3.- Exterior carry handles, non-slip design
- 4.- Dive patch
- 5.- Lifelines (Peripheral)
- 6.- Transom lifting rings (Stainless steel)
- 7.- Splash guard
- 8.- Two large D-rings on rear tubes (Stainless steel)
- 9.- Epoxy coated plywood transom
- 10.- Standard self bailer with plug (Pop-up design)
- 11.- Performance tubes (Optional)
- 12.- Bow handle (Stainless)
- 13.- Two large tow rings on bow (Stainless steel)
- 14.- Keel rub strake
- 15.- All around rub strake, flat profile, black

REAR



SIDE





CAPACITY

Passenger capacity: _____ 8
 Max payload: _____ 2,395 lbs
 Floorboard usable area: _____ 23,2 ft²
 Buoyancy tube volume: _____ 46,6 ft³

FABRIC

Hypalon (CSM), Orca 866 (military grade), 1670 dtex

VALVES

Inflation valves on main tube: _____ 5
 Keel inflation valve: _____ 1
 Overinflation valves: _____ 5

REINFORCEMENTS

All around rub strake, flat profile, black: _____ 1
 Flat rub strake underneath keel, black: _____ 1
 Splash guard: _____ 2

HANDLING

Lateral carrying handles: _____ 8
 Bow carrying handle: _____ 1
 Exterior lifeline (peripheral): _____ 3
 Interior lifelines: _____ 2
 Interior large tie down D-Ring: _____ 7
 Bow bag D-Ring: _____ 4

FACTORY WARRANTY

5 years recreational / 2 year commercial

TRANSOM

Self-bailers _____ 1
 Aluminum engine mounting plate: _____ 1
 Transom sacrificial plate (marine plywood) _____ 1

ENGINE (aluminum floor)

Recommended power (aluminum floor) _____ 30 HP
 Max power (aluminum floor): _____ 40 HP
 Shaft length: _____ 15" short shaft
 Max engine weight: _____ 245 lb

DIMENSIONS

Overall length: _____ 14' 0"
 Inner length: _____ 10' 3"
 Overall width: _____ 6' 5"
 Inner width: _____ 3' 1"
 Tube diameter: _____ 20"
 Boat weight with floor: _____ 275 lbs

INFLATION

Air chambers on main tube: _____ 5
 Inflatable keel: _____ 1
 Performance tubes (optional): _____ 2

TOWING AND LIFTING

D-Rings: _____ Stainless steel
 Bow large towing D-Ring: _____ 2
 Rear large towing D-Ring: _____ 2
 Rear lifting points in transome: _____ 2

SHIPPING INFORMATION



BOAT

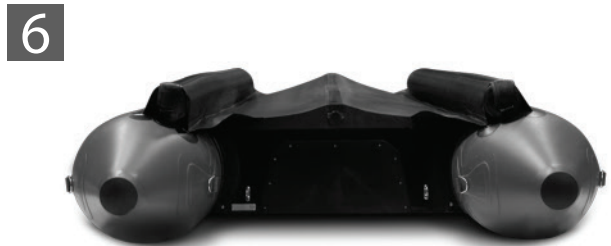
- Package dimensions: 56x30x25
- Package weight: 345 lbs.



**Optional reflective panel*



**Aluminum floor shown*



**Optional performance tubes*

